

# Carkit echo cancellation in combination with time delay MS-8

All modern carkits have an echo cancellation algorithm which prevents echo during calls. In some cars adding time delay to the audio signal will interfere the echo cancellation algorithm. The solution is to switch off JBL MS-8 time delay.

## We have found an easy solution

Reprogramming “mute” button remote control MS-8 to switch off all added time delay by processing and Logic 7®



Press “mute” button once before answering telephone call

## How to reprogram JBL MS-8

- Do not turn off MS-8, the PC or disconnect the USB during the update
- If you'll update using a laptop, ensure the battery will not be completely discharged during the update. If possible, plug in the laptop power supply.

1. Unzip USBXpress\_Install. zip file to USBpress\_Install.exe



USBXpress\_Install.zip  
3,016 KB



2. Install USBXpress\_Install.exe
3. Unzip MS8Pro6bands.zip to MSPro6bands



MS8Pro6bands.zip  
749 KB



MS8Pro6bands

4. Connect MS8 Unit to Display
5. Connect MS8 Unit via USB to PC
6. Bring MS8 Unit to the Main Menu!
7. Open map MS8Pro6bands and run MS8Pro115.exe

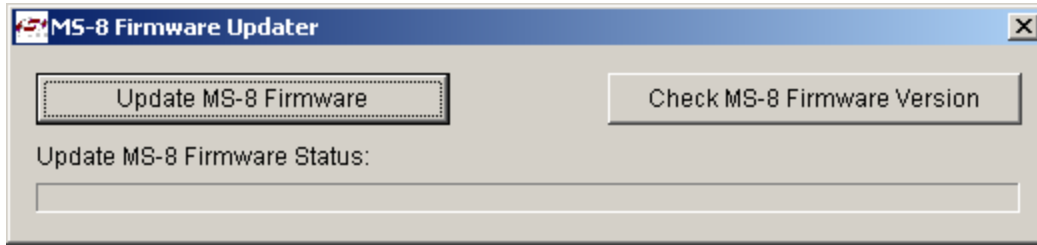


MS8Pro6bands

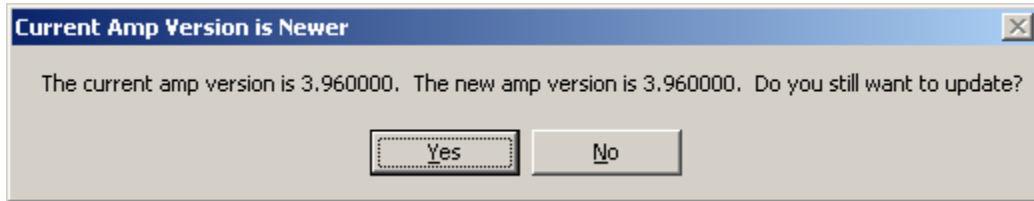


MS8Pro115.exe  
AutoDSPPro MFC Application

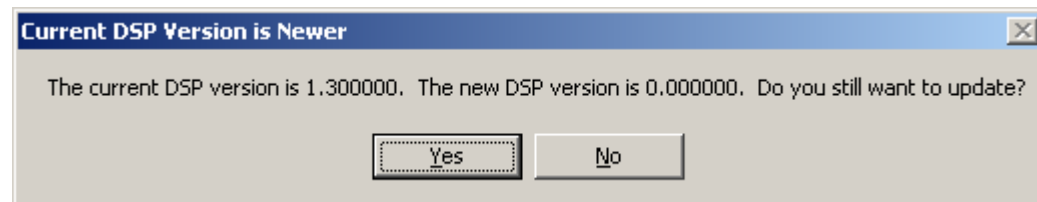
8. Click on: “Update MS-8 Firmware”



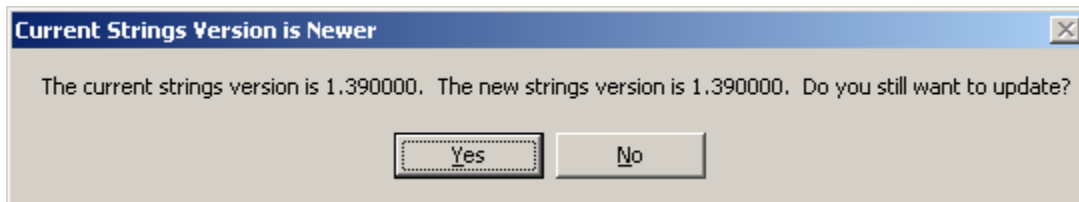
9. Click on: "No"



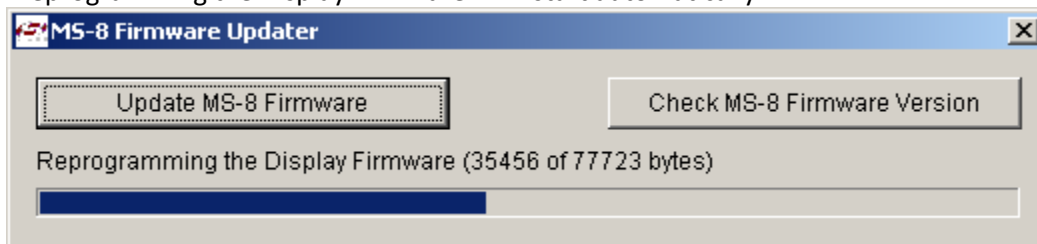
10. Click on: "No"



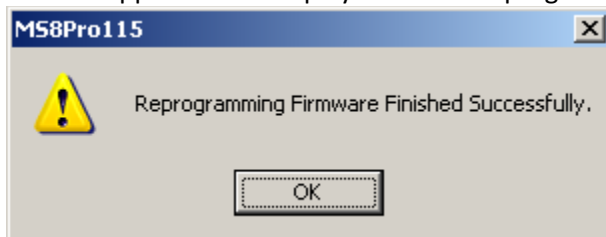
11. Click on: "No"



12. "Reprogramming the Display Firmware" will start automatically



13. This will appear in the display when the reprogramming is finished successfully



14. Go to the System Settings->About menu in the Display and verify the new versions of firmware

15. Do a 'Restore Factory Defaults'