

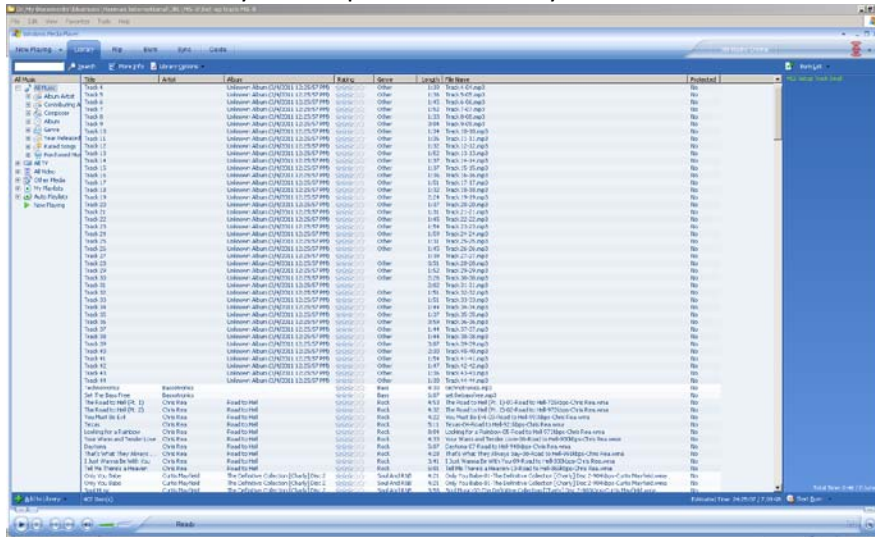
# How to burn JBL MS-8 set-up track

1. Download MLS Setup Track Small.wav

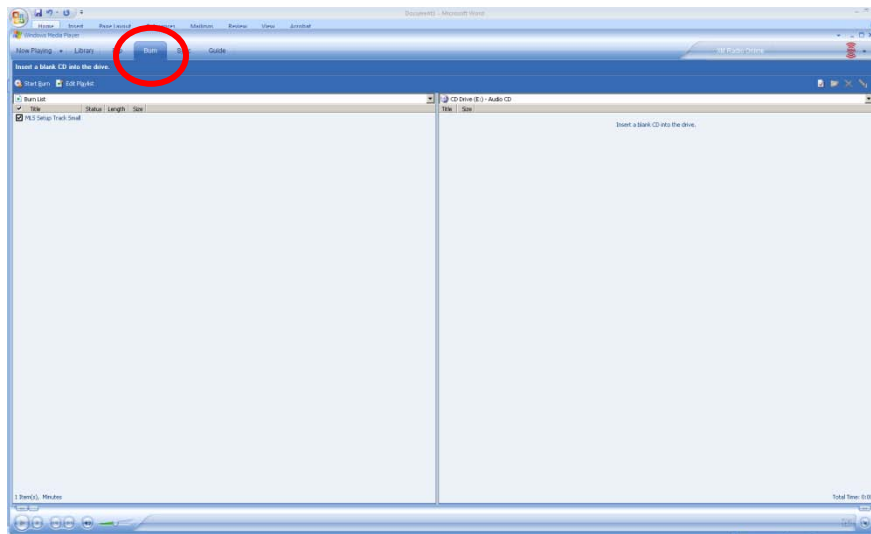


MLS Setup Track Small.wav

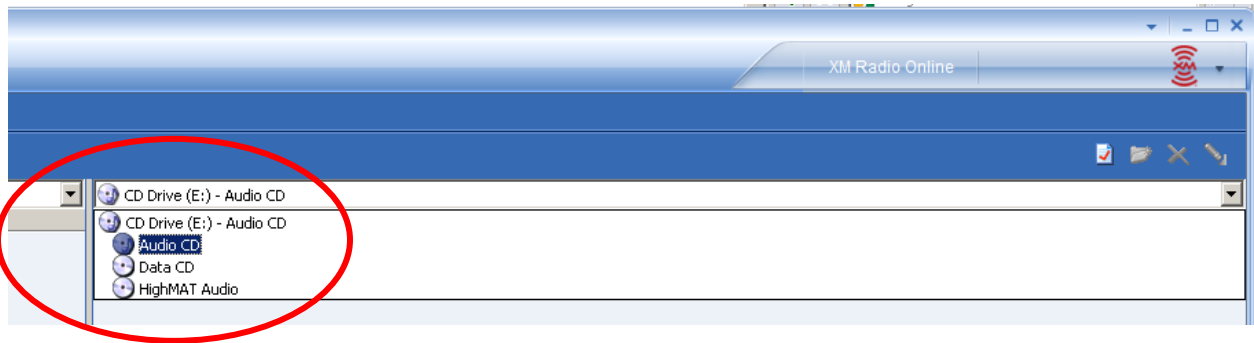
2. Right click on MLS Setup Track Small.wav and “add to Burn List”
3. Windows Media Player will open automatically



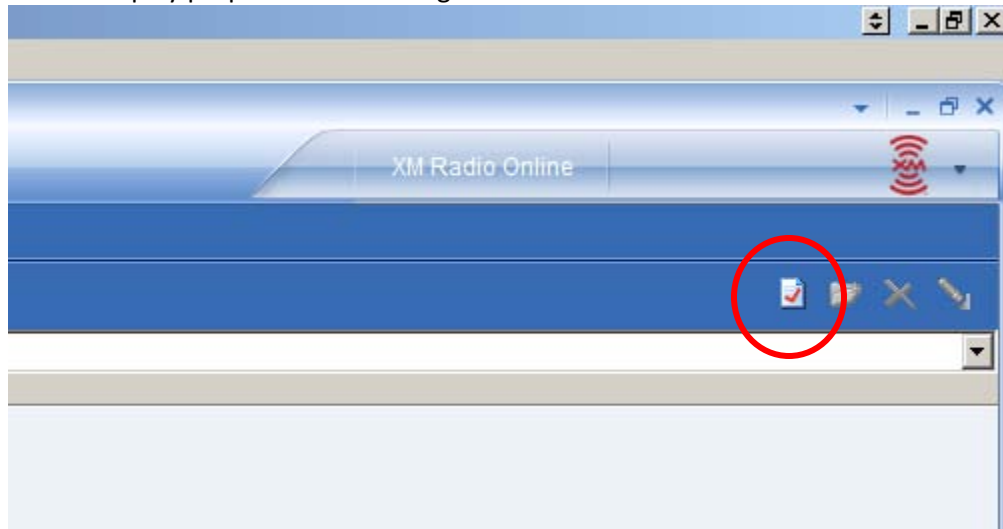
4. Click on “Burn”



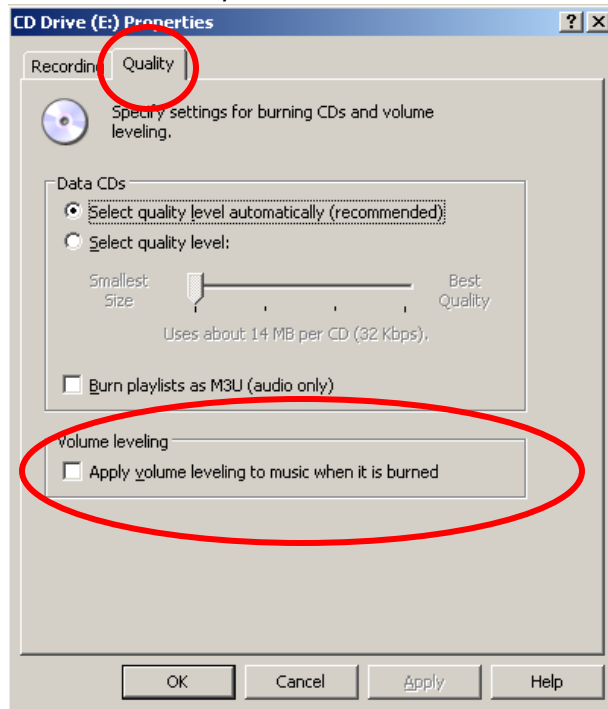
5. Select "Audio CD"



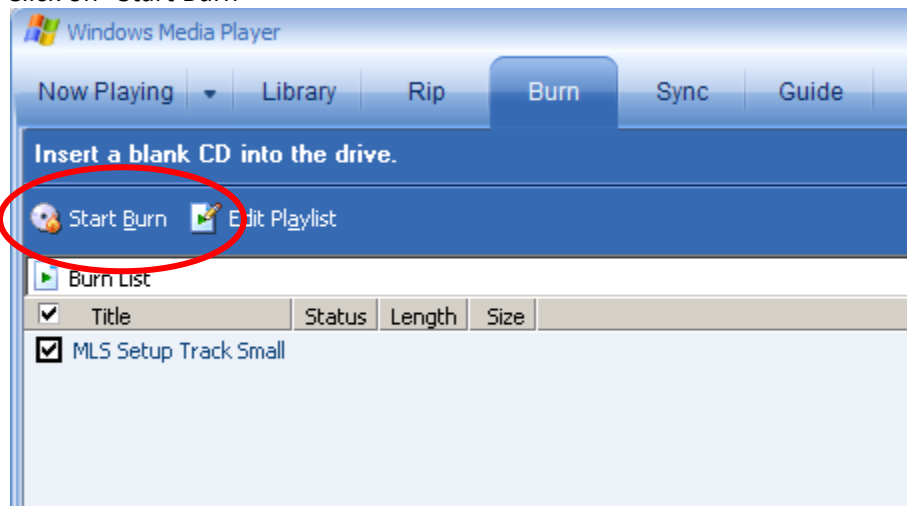
6. Select "Display properties and settings"



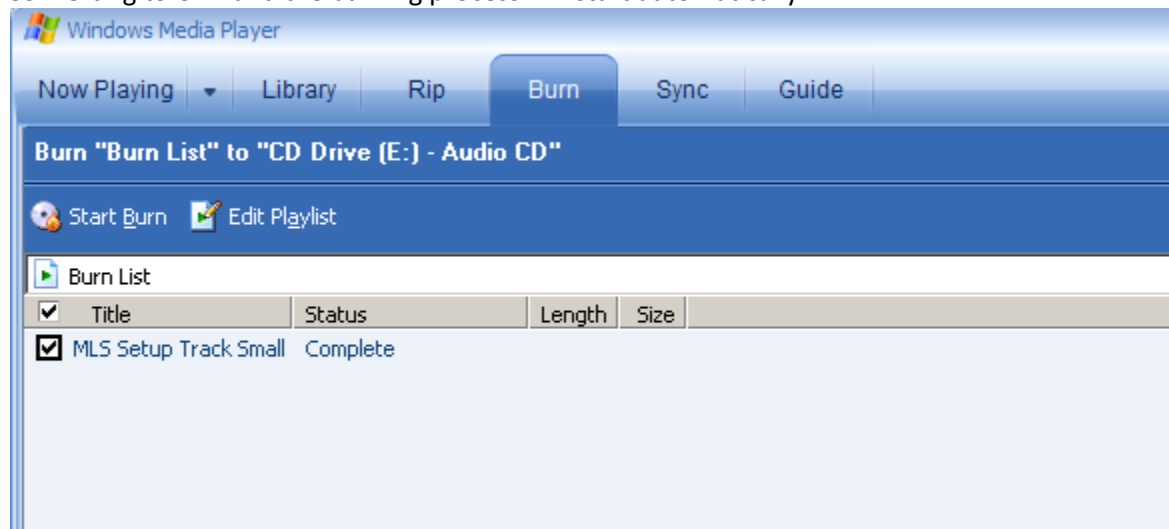
7. Select tab "Quality" and make sure to DESELECT "Apply volume leveling to music when it's burned"



8. Click on "Start Burn"



9. Converting to CDA and the burning process will start automatically



10. When you explore the disk you will find the setup track "Track01.cda"

